

ECOSYSTEMS

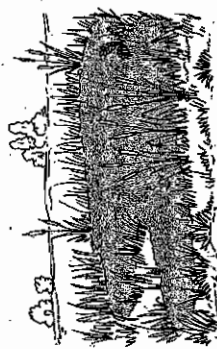
aquatic biome

Aquatic Biomes

What are the characteristics of Earth's water environments?

Freshwater biomes include the flowing water of rivers and streams and the relatively still water of lakes and ponds. The faster water flows, the clearer it is and the more oxygen it contains. Organisms that live in fast-moving water are often strong swimmers, such as trout or salmon. Plants grow only on the banks of swift streams. Slower moving water contains more debris washed in from the shore. So, it is less clear but contains more nutrients. Plants can grow in the shallow areas. The water of lakes and ponds moves very little. These biomes contain more plant life than rivers and streams.

Marine biomes are saltwater environments. They include the open ocean, the ocean shore, and estuaries. Sunlight penetrates to a depth of only about 200 m in ocean water. So, plants and algae live only in the top layers of the open ocean and the shorelines. Ocean animals that live below 200 m depend on each other for food, or on material that drifts down from above. Animals and algae that live along the seashore are adapted to survive strong wave action and to changes brought about by the



Ponds are smaller and shallower than lakes. The water is warm and sun penetrates to the bottom, making it a good environment for lush plant growth.

tides. At high tide, these organisms are covered with nutrient-rich water. At low tide, they may be completely exposed to air and sun.

Estuaries form wherever a river or stream meets the ocean. The saltiness of the water varies. It depends on the amount of freshwater from the river and saltwater brought in by the tides. Estuaries are very fertile environments. Many estuaries serve as nurseries for young ocean fish. They are also the source of much of the seafood humans consume.

How can human activities harm aquatic environments?

Our goal is to learn about the different aquatic ecosystems

Read pages 325 to 331 of your textbook
NY science-Grade 6 / Chapter 11 / Section 3

What is the difference between a river, an estuary and the ocean?

make a list of the aquatic biomes

Call about 2 types of aquatic biomes