

# ADAPTATION

A PUBLICATION OF THE NEW YORK BIOLOGY TEACHERS ASSOCIATION

**SPRING. 1993**

**Volume XIV No. 3**

## **The Five Senses BOARD GAME**

By  
Gregory Grambo

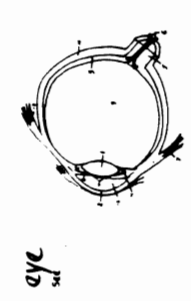
The Louis Armstrong Middle School

page 8, 9, 13

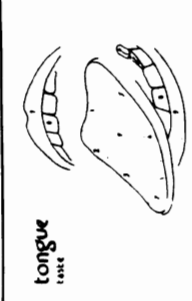
# THE FIVE SENSES BOARD GAME

As children grow up they are encouraged to play. Adults give something learned at an early stage in a form of fun. Mixing playing with learning would have a child playing at the same time. Games have a built-in motivation. They are fun and children love them. Why not then, let children do what they do best, let them play a game.

In this game, information about the five senses will be presented to the children in a format different from conventional experimentation. The gameboard and cards will be durable, laminated and will provide you with a game that is not only water resistant, but also damage proof.



eye



tongue

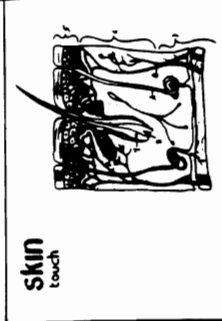


SENSE CARDS

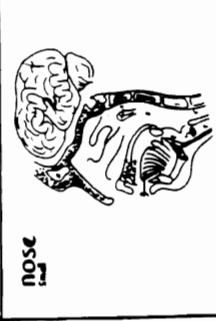
**The First Sense**  
 Each player is given one playing piece and a sheet from the "Index" pad.  
 15, 20, 25  
 Place your playing piece on one of the five senses. Each player takes a turn and rolls the die. "Right" means you can take a card. "Wrong" means you cannot. Play until someone has collected all five senses.  
 15, 20, 25  
 The object of the game is to be the first player to find an all five senses.



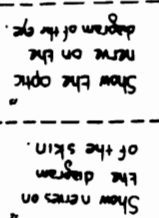
ear



skin touch



nose



Show the optic nerve on the diagram of the eye.

Show names on the diagram of the skin.

Define Pitch

How does sound travel?

Show a skin pore on the diagram



How do smells travel?

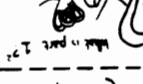
The four (4) parts of the tongue are?



What is part 2?



What is part 2?



What is part 2?



What is part 2?

CONTINUED ON PAGE 10

Copy Onto Card Stock Or Cut Out And Glue Onto Index Cards

Copy Onto Card Stock Or Cut Out And Glue Onto Index Cards

Glue Game Board To A File Folder  
 Playing Pieces Can Be Made From Cut Construction Paper.

Glue Game Board To A File Folder

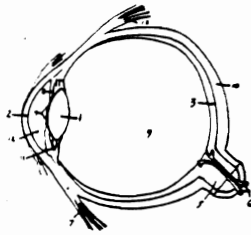
# the FIVE senses BOARD GAME

By GREGORY GRAMBO  
The Louis Armstrong  
Middle School

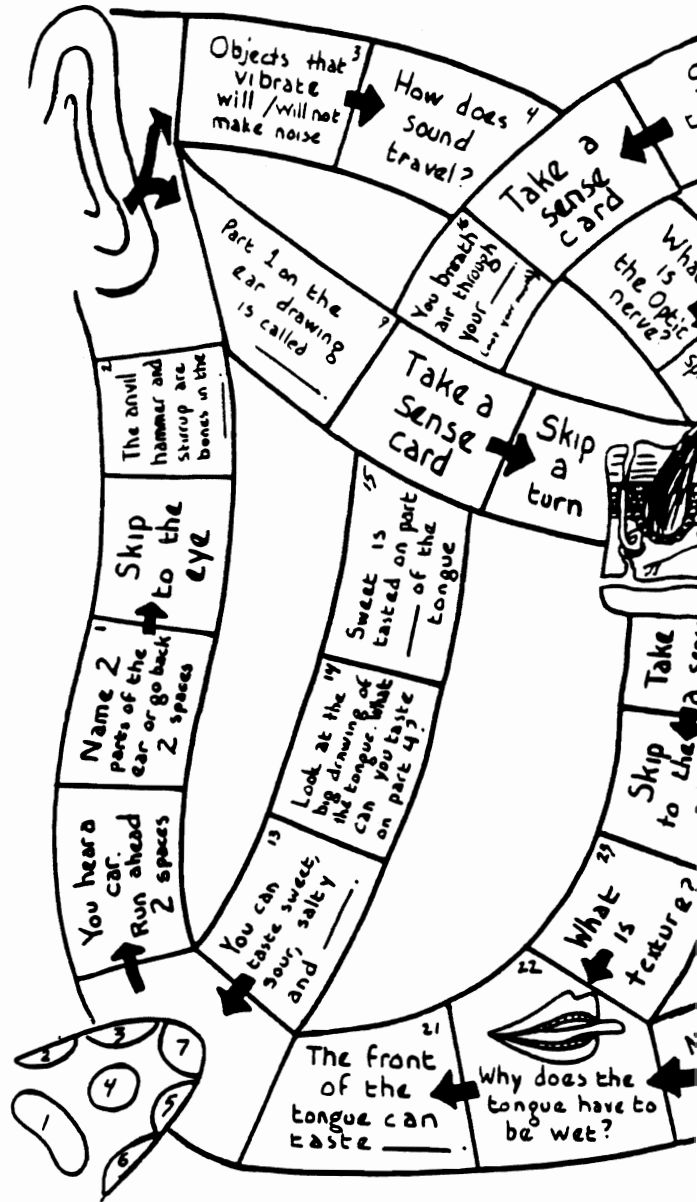
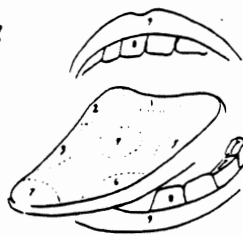
As children grow up they are encouraged to play. Adults give them rattles and toys. Playing is something learned at an early stage of development for a child. Playing is a lot of fun. Mixing playing with learning would have a child acquiring knowledge while having fun at the same time. Games have a built in motivation. They are fun and children love them. Why not then, let children do what they do best? Let them play a game.

In this game, information about the five senses will be presented to the children in a format different from conventional experimentation. The gameboard and sense cards should be glued on to cardboard for durability. Laminating them will provide you with a game that is not only water resistant, but also damage proof.

eye  
see



tongue  
taste



Glue Game Board To A File Folder

sense cards



The four (4) types of tastes are?

## GAME BOARD

**the five senses**

**sense cards**  
© GRAMBO

**ear**  
hear

**skin**  
touch

**nose**  
smell

**Questions on the Game Board:**

- 17 Smells travel to the \_\_\_\_\_ nerve.
- 18 Molecules carry \_\_\_\_\_ to the nose.
- 12 The largest sense organ in the body is \_\_\_\_\_.
- 11 What are olfactory nerves?
- 10 Nerves send messages to the \_\_\_\_\_.
- 9 In the eye, what does the lens do?
- 8 Take a sense card.
- 7 The retina is found in the \_\_\_\_\_.
- 6 What is the job of the iris?
- 5 Name parts of the eye.
- 4 How is the eye like a camera?
- 3 Name the colored part of your eye.
- 2 Take a sense card.
- 1 Skip to the tongue.

**The Five Senses**

To Begin

Each player is given one playing piece and a sheet from the sense pad.

To Play

Place your playing piece on one of the five senses. Each player takes a turn and rolls the die. Highest roll goes first. Players go clockwise around the table.

Players move the number of spaces shown on the die.

Players are to do or answer any question that the space requires. If a player answers a question wrong, the player goes back two (2) spaces. If a player answers a question correctly, the player moves ahead one (1) space. If a player lands on a space marked "Take a sense card", the player is to do what the card says. If the player cannot do this, the player will go back five (5) spaces and will lose a turn. If a player does this correctly, the player moves ahead two (2) spaces.

To Win

The object of the game is to be the first player to land on all five senses.

© 1993 GRAMBO

Glue Game Board To A File Folder

Playing Pieces Can Be Made From Cut Construction Paper.

How does sound travel?	Where is the inner ear?	How does sound travel?	Define Pitch	Show nerves on the diagram of the skin.	Show the optic nerve on the diagram of the eye.

Copy Onto Card Stock Or Cut Out And Glue Onto Index Cards

CONTINUED ON PAGE 13

# SENSITIVITY FOR THE EYE

## front sides of the EAR

- 16-You breathe air through your MOUTH and NOSE.
- 17-Smells travel to the OLFACTORY nerve.
- 18-Molecules carry smells and pieces of the object that smell to your nose.
- 19-Name the colored part of the eye. IRIS
- 20-How is the eye like a camera? The eye and the camera have a lot of parts that are the same. Both have a lens, and a shutter or iris.

## EAR

- 1-Name two parts of the ear. (See the chart of the ear)
- 2-The anvil, hammer and stirrup are bones in the ear.
- 3-Objects that vibrate will not make noise. Sound travels away from objects in waves.
- 4-How does sound travel? The optic that carries images to the brain.
- 5-What is the optic that carries images to the brain? The nerve in the back of the eye that carries images to the brain.
- 6-In the eye, what does the lens do? It brings the picture (what you are looking at) into focus.
- 7-The retina is found in the eye. See chart of the eye.
- 8-What is the job of the iris? It varies the amount of light that enter the eye.
- 9-Part 1 On the ear drawing is called the cochlea.
- 10-Nerves send messages to the BRAIN.
- 11-What are olfactory nerves? The nerves in the nose that send messages (about odors) to the brain.
- 12-The largest sense organ in the body is the SKIN.
- 13-You can taste sweet, sour, salty and BITTER.
- 14-Look at the drawing of the tongue. What can you taste on area 4?
- 15-Sweet is tasted on the

## front of the tongue can taste things that are salty.

- 21- The front of the tongue can taste things that are salty.
- 22-Why does the tongue have to be wet? The item to be tasted has to be dissolved (in a solution of saliva)
- 23-What is texture? How something feels (rough, smooth, slippery, etc)
- 24-Name 3 parts of the eye. See chart of the eye.
- 25- Name all five senses.

## TASTE-TONGUE

- 1-Bitter
- 2-Sour
- 3-Sweet
- 4-NO TASTE HERE
- 5-Sour
- 6-Sweet
- 7-Salty
- 8-Teeth
- 9-Lips

## CHARTS

- 1-Olfactory Nerve
- 2-Brain
- 3-Tongue
- 4-Trachea
- 5-Esophagus
- 6-Vocal Chords
- 7-Epiglottis
- 8-Pharynx
- 9-Eustachian Tube
- 10-Teeth
- 11-Sinus

## epidermis

- 5- epidermis
- 6- dermis
- 7- fatty tissue
- 8- blood vessel
- 9- sebaceous gland

## SENSE CARDS

- 1-What is part 1 (nose)? Olfactory Nerve
- 2-What is part 1 (ear)? Cochlea
- 3-Where would you taste bitter? On the back of the tongue.
- 4-What is part 2 (nose)? Brain
- 5-What is part 2 (ear)? eardrum
- 6-The four types of tastes are BITTER, SWEET, SOUR and SALTY.
- 7-How does smells travel? Small pieces of an object break off and travel with the air until they enter your nose.
- 8-Where is the inner ear? It is part C on the diagram
- 9-Show a skin pore on the diagram of the skin.

## How does sound travel?

- 10-How does sound travel? Sound travels in waves away from the vibrating object which is creating the noise.
- 11-Define Pitch

## PITCH: high or low note. number of air vibrations per second

## Show nerves on the diagram of the skin. They are part 8.

## Show the optic nerve on the diagram of the eye.



## TASTE BUDS

- 1-2-3
- 4-5-6

## SKIN

- 1- capillaries
- 2- sweat gland
- 3- papilla of hair
- 4- hair follicle